

## **e-Contacts EP instructions for Outlook 2010**

1. General
2. Closing a prior version of **e-Contacts EP** in Outlook
3. Opening **e-Contacts EP** in Outlook
4. Using the predefined list views
5. Creating custom views
6. Copying and exporting lists
7. Group mailings
  - 7.1 Creating mailings or printing labels in Word
  - 7.2 Group Faxes
  - 7.3 Group E-mails
  - 7.4 Personalized Group E-mails
8. Assistants
9. **e-Contacts EP** fields

### **1. General**

These instructions describe how to install and use **e-Contacts EP**. They are based on Microsoft Outlook 2010. Mailings through e-mail, fax, printout, etc. depend on your installations. Below, we describe various methods of selecting and preparing data for mailings and other purposes.

Instructions assume the user's basic general familiarity with the Microsoft Windows environment and with basic standard operations such as "drag-and-drop", "cut-and-paste", use of menus and dialogue boxes, etc.

**e-Contacts EP** is an "outlook data file" file (.pst), the standard format used and created by MS Outlook. Its use follows the standard Outlook procedures, as described in Outlook Help (accessible e.g. by pressing the "F1" function key on your keyboard). **e-Contacts EP** is also available in alternative formats (Excel, Access, CSV) which are compatible with other database and communications softwares.

If at any point you have a question not answered by this documentation or Outlook Help, you may:

- Check the Microsoft Office Outlook site:  
<http://office.microsoft.com/en-us/outlook/FX100487751033.aspx>
- E-mail questions to: **[e-contactsep@eamonnbates.com](mailto:e-contactsep@eamonnbates.com)**

#### **Abbreviations:**

The "e-Contacts EP 2012.1" edition of the database introduced the possibility to sort members of a Committee, Delegation or Other Body by their job position, simply by clicking on the "Categories" column:

- Chairs of a Committee, Delegation or Other Body are identified by the suffix "**-Ch**";
- Vice-Chairs of a Committee, Delegation or Other Body are identified by the suffix "**-VC**";

- Political Group Coordinators and Deputy Political Group Coordinators of a Committee are identified by the suffix “-GC” and “-DGC”;
- The President of the Parliament’s Bureau and of the Conference of Presidents (MEP Martin Schulz) is identified by the suffix “-Pr”;
- As before, regular Members of a Committee, Delegation or Other Body have no suffix;
- As before, Substitute members of a Committee or Delegation are identified by the suffix “-S”.

**NB:** The Committee for Economic and Monetary Affairs, the Committee for Employment and Social Affairs and the Committee for Internal Market and Consumer Protection have an additional position (Deputy Group Coordinator), which is identified by suffix “-DGC”.

**NB 2:** The Delegation for the ACP-EU Joint Parliamentary Assembly does not have a Chair, it has a “Co-President” (MEP Louis Michel). The identifying suffix is “-CP”.

All the information about MEP Activities (i.e. Committees, Delegations, Other Bodies) is organized in a way to make the product easy to use. Activities are categorized as follows:

- Names of Committees are preceded by “C - ”;
- Names of Delegations are preceded by “D - ”;
- Names of “Other Bodies” are preceded by “O - ”.

Here are some practical examples:

- “C - **AgricultureRuralDevelopment-Ch**” refers to the Chair of the Committee on Agriculture and Rural Development;
- “D - **Canada-VC**” refers to a Vice-Chair of the Delegation for relations with Canada;
- “O - **Conference of Committee Chairs-Ch**” refers to the Chair of the Conference of Committee Chairs.

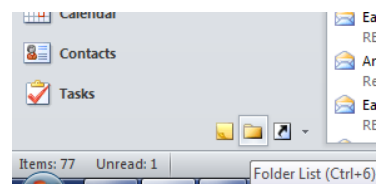
## 2. Closing a prior version of e-Contacts EP in Outlook

If you are installing **e-Contacts EP** for the first time you can skip this section and go straight to chapter 3.

Although new versions of **e-Contacts EP** may co-exist with older ones, it is recommended you delete old versions from both Outlook and your hard disk.

However, if you have entered your own data into the old Outlook file, this will also disappear. In this case, it will, therefore, be necessary to keep and manually transfer this information.

1. Make sure that the **Folder List** is visible.
2. In the **Folder List**, right-click on “e-Contacts EP xxxx.x” and click on “Close e-Contacts EP xxxx.x”.
3. To delete the old **e-Contacts EP** file from your hard disk, make sure Outlook is closed and then delete the old version of **e-Contacts EP** from your custom location.

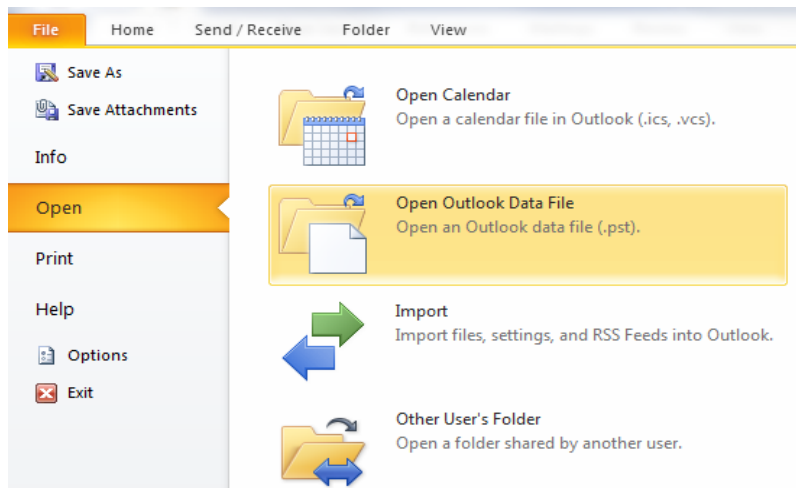


If you are sharing **e-Contacts EP** as a MS Exchange Public Folder, select it in the **Folder List** (under **All Public Folders**) and delete it. This will remove all data from MS Exchange Server.

### 3. Opening e-Contacts EP in Outlook

Before you can use **e-Contacts EP** you need to copy the data file to your hard disk and make it readily available for Outlook.

1. Make sure no previous version of **e-Contacts EP** is open in Outlook. If so, we advise you to close and delete it (see chapter 2 above).
2. Double-click on the outlook file attachment in the email (e-Contacts EP xxxx.x) and save the zip file.
3. Extract the compressed file and save the outlook data file in a location of your choice.
4. On the Outlook menu, select the **File** tab and then **Open / Open Outlook Data File...**



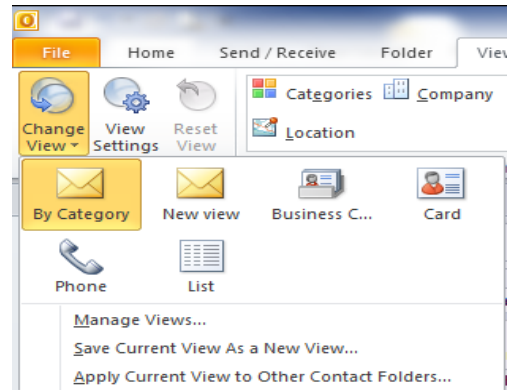
5. Navigate to the folder where you saved the outlook data file, select and open it.
6. You will see that "e-Contacts EP xxxx.x" has appeared in the **Folder List**. Click on the **Contacts** tab to view the full list of MEPs.
7. If you want to share **e-Contacts EP** as an MS Exchange Public Folder on the network copy it into your **All Public Folders**. You can achieve this by clicking on the "e-Contacts EP xxxx.x" folder and dragging it to **All Public Folders**.

## 4. Using the pre-defined list of views

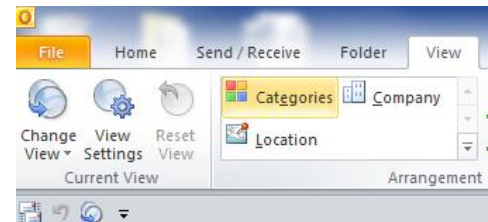
Views can be used for printout, mail merges or for copy and paste into other programs. Some standard views are available in Outlook, such as viewing "By Category", which shows the MEPs divided by EP Committee, EP Delegation and other EP bodies. You may also consider creating a custom view if you would like to select/regroup MEPs in a different manner (see next chapter).

### To choose a pre-defined view:

1. Clicking on the **View** tab and then on **Change View** will display the pre-defined views.
2. Clicking on an entry will activate that view.



**Please note:** if you are unable to see the "By Category" view among the pre-defined views, you can also access it by clicking on **View/Change View/List** and then click on **Categories** as shown in the picture. To save this view, click **Save Current View as New View...** in the **Change View** dropdown menu.



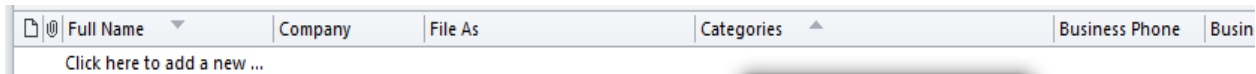
To view assorted contacts, such as members of the Agriculture and Rural Development Committee for example, select "By Category" from the "Change View" list box. This will display a collapsed view of all MEPs, grouped in the EP Committees they belong to. (Remember: each Committee has a Chair as in "C - AgricultureRuralDevelopment-**Ch**", a number of Vice-Chairs as in "C - AgricultureRuralDevelopment-**VC**"), a number of Political Group Coordinators as in "C - AgricultureRuralDevelopment-**GC**", a set of regular Members as in "C - AgricultureRuralDevelopment", and a set of Substitute Members as in "C - AgricultureRuralDevelopment -**S**").

Categories: C - AgricultureRuralDevelopment (46 items)							
Mr. John Stuart Agnew	EFD	johnst...	Agnew, John Stuart	C - AgricultureRuralDevelop...	0032 2 284 5404	00	
Mr. Richard Ashworth	ECR	richard...	Ashworth, Richard	C - AgricultureRuralDevelop...	0032 2 284 5309	00	
Mr. Liam Aylward	ALDE	liam.ay...	Aylward, Liam	C - AgricultureRuralDevelop...	0032 2 284 5782	00	
Mr. José Bové	Greens/EFA	jose.b...	Bové, José	C - AgricultureRuralDevelop...	0032 2 284 5352	00	
Mr. Luis Manuel Capoulas ...	S&D	luisma...	Capoulas Santos, Luis Manuel	C - AgricultureRuralDevelop...	0032 2 284 5991	00	
Ms. Vasilica Viorica Dancila	S&D	vasilica...	Dancila, Vasilica Viorica	C - AgricultureRuralDevelop...	0032 2 284 5808	00	
Mr. Spyros Danellis	S&D	spyros...	Danellis, Spyros	C - AgricultureRuralDevelop...	0032 2 284 5460	00	
Mr. Michel Dantin	EPP	michel...	Dantin, Michel	C - AgricultureRuralDevelop...	0032 2 284 5533	00	
Mr. Paolo De Castro	S&D	paolo...	De Castro, Paolo	C - AgricultureRuralDevelop...	0032 2 284 5520	00	
Mr. Albert Dess	EPP	albert...	Dess, Albert	C - AgricultureRuralDevelop...	0032 2 284 5231	00	
Ms. Diane Dodds	NI	diane...	Dodds, Diane	C - AgricultureRuralDevelop...	0032 2 284 5770	00	
Mr. Herbert Dorfmann	EPP	herber...	Dorfmann, Herbert	C - AgricultureRuralDevelop...	0032 2 284 5158	00	
Mr. Robert Dušek	S&D	robert...	Dušek, Robert	C - AgricultureRuralDevelop...	0032 2 284 5413	00	

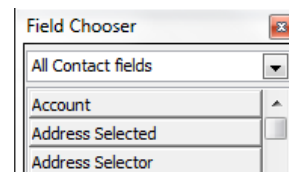
**To display additional fields:**

In addition to the displayed fields (e.g. Full Name, Company (Political Group), E-Mail, Category, Business Phone, Business Fax), you may require other fields. To add other fields to the view:

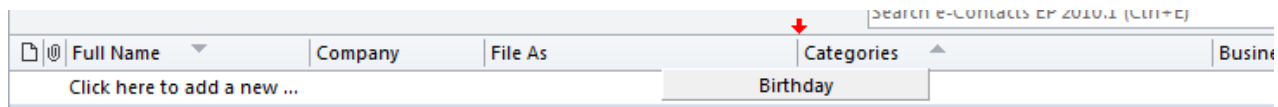
1. Right-click on the "Column Header Row" (displayed below) and select "Field Chooser" from the menu.



2. To make sure to have a choice from all available fields, select "All Contact fields" from the Field Chooser drop-down list.



3. Scroll down, click on "Birthday" for example, and drag it (keeping the left mouse button pressed) to the "Column Header Row" where you want to place it.



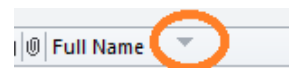
4. To change the position of a field, drag its heading to another position in the "Column Header Row".
5. To delete a field, drag its heading down until it is displayed with an "X". Drop to delete from view.

**To rename Column Headers in a view:**

1. Right-click on the "Column Header Row".
2. On the drop-down menu, select "View settings", followed by "Format Columns".
3. Change the entry in the "Label:" field.

**To sort by a field:**

Click on the corresponding Column Header. Clicking once will sort by ascending; clicking again will sort by descending order (as displayed by the arrow).

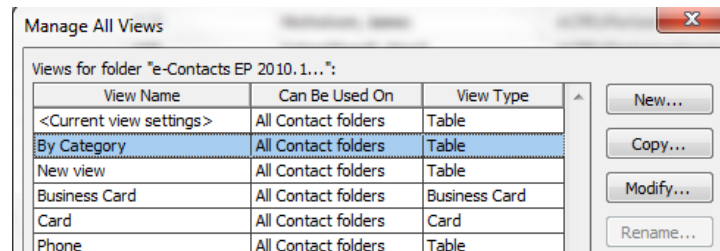


## 5. Creating custom views

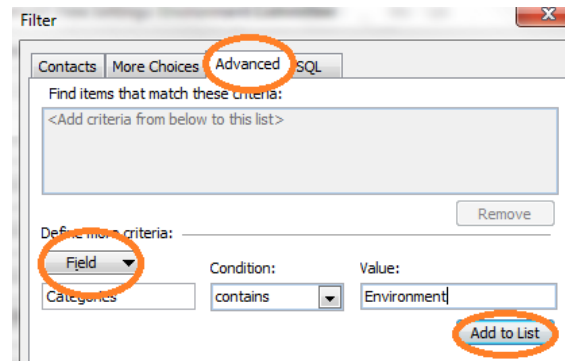
If there is a group of MEPs that you communicate with on a regular basis which cannot be categorised according to the pre-defined list of views, you may consider creating your own custom view which will then be easily accessible via the "Change View" drop down list on your tool bar.

As an example, we will describe creating a view that displays all "Environment, Public Health and Food Safety" Committee Members (Chair, Vice-Chairs, Political Group Coordinators, Full Members and Substitute Members).

1. On the Outlook menu: **View / Change View / Manage Views...**
2. Select a view you want to base your custom view on – in this case: "By Category"

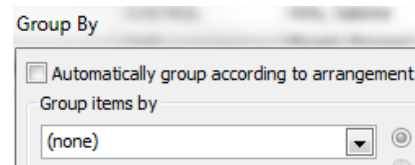


3. Click the "Copy..." button on the right.
4. In the "Name of new view" field of the "Copy View" window, type "Environment Committee Members".
5. In the "Advanced View Settings" window, click on the "Filter" button.
6. In the "Filter" window, click on the "Advanced" tab.
7. Click on the "Field" drop-down menu, rest the cursor on "the "Frequently used fields" entry, and click on "Categories". The "Condition" field is automatically set to "contains".
8. Type "EnvironmentPublicHealthFoodSafety", in the "Value" field.
9. Click the "Add to list" button, and close the next two windows by pressing "OK" twice, which brings you back to the "Manage All Views" window.
10. Press the "Apply View" button.



The view you have now created displays only Members of the "Environment, Public Health and Food Safety Committee" Committee, but note that they are categorised according to the other Committees, Delegations and Other Bodies they work in. Although this may be helpful in some cases, you may want a list of the Environment Committee which is not further broken down. To achieve this, some more steps are required:

1. On the Outlook menu click on: **View / View Settings...**
2. Click on the "Group by..." button.



3. In the "Group items by..." drop-down list, select the top entry: "(none)"
4. Close all windows with "OK". This gives you an 'uncategorised' list of Committee Members.

## 6. Copying and exporting lists

Any Outlook list may be printed directly from Outlook, copied into a separate Outlook folder for re-use (e.g. as a distribution list for mailings by e-mail, fax, print, etc.), and/or copied to a separate application (e.g. Access, Excel, etc.).

### Copying a list into an Excel sheet:

As an example, we will use the "Environment Committee Members" list to create a separate contacts folder.

1. Make sure the "Environment Committee Members" view is active in the **View / Change View** list box.
2. Scroll to the top of the list, and select the first entry.
3. Keeping the "Shift" key on your keyboard pressed, use the arrow keys to scroll to the last list entry. This will select all entries.
4. Press "Ctrl + C" to copy (or right click on the selected list and select "Copy").
5. Open a new sheet in Excel and make sure the first field (A1) is selected, and *Paste*.
6. A new table is created, with the field labels in the first row.

## 7. Group mailings

### 7.1. Creating mailings or printing labels in Word

To perform a mail merge:

1. Prepare the letter or label layout you would like to use for your mailing (the so-called "starting document"). Save and close the document.
2. In Outlook, select and mark the recipients you want to send the letter to.
3. Go to **Home / Mail Merge...**
4. Follow the instructions in the "Mail Merge Contacts" window and select the starting document.
5. The starting document will open automatically.
6. Now you can insert/modify the greeting line or the address block and finish the mail merge.

### 7.2. Group Faxes

Sending a group fax from Outlook to a selected set of recipients depends on the user's fax environment. All fax operations, such as setting up and managing recipient lists, including entries that contain more than one recipient, will work in exactly the same way as with any other Outlook Contacts data.

### 7.3. Group E-mails

An e-mail to a selected group of recipients is an extremely simple operation:

1. Configure a list view to show those MEPs to whom you wish to send an e-mail.
2. Select all. You may choose to select or de-select some by clicking on entries while keeping the "Ctrl" key on your keyboard presses.
3. On the Outlook menu, click **Home / E-mail**. A blank e-mail form with all of the recipients in the "To" field will appear. At this point, you may still add or delete recipients before sending the mail.

### 7.4. Personalized Group E-mails

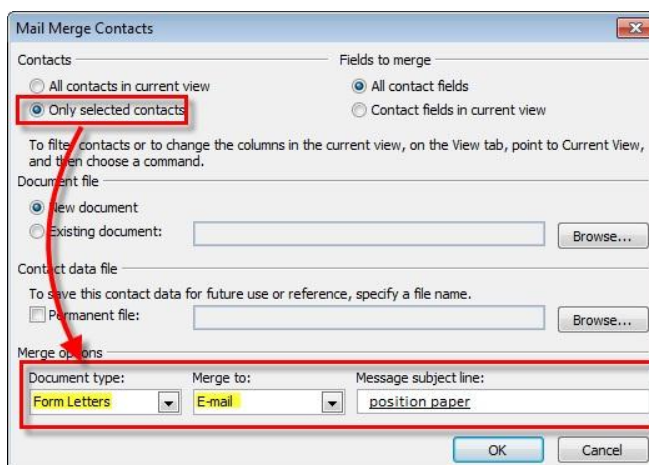
Now you can send a personalized e-mail to a selected group of recipients! Each recipient will receive an e-mail directly addressed to him/her. To do so, we must use the **Mail Merge** function:

1. Select those MEPs to whom you wish to send an e-mail (from your custom view, or the regular one)
2. Next above on the toolbar Click **Mail Merge**.



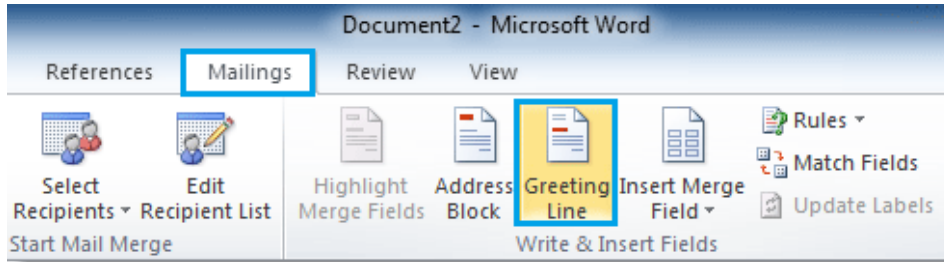
3. The mail merge options should pop-up in a new window. At the top, Check Only selected contacts. At the bottom, Set the Document Type to Form Letters, and Merge To to E-mail.

The **Message subject line** can be set to whatever subject you want the email to have. In this example I want the subject title of all the emails to be "position paper".



4. Click OK to continue. When you Click OK a new compose email will open up. From here all of the contacts are stored so no need to worry about adding them unless you forgot someone.
5. In the composed email window, let's add a personalized Greeting. Click **Greeting Line**.

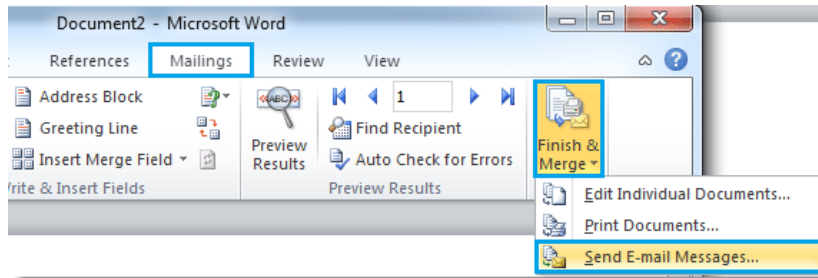




6. In the pop-up window you can customize your Greeting line, the default is: Dear Mr/Ms. + Surname (the Surname and the title will change according to each contact detail). Click OK to continue. The preview will show what greeting will be displayed for each person receiving the email, but while you are composing, it will look like «Greeting Line».



- When you are all done writing click **Finish & Merge**, then select **Send E-mail Messages**. Click ok again to confirm.



Now you've sent out your group email to all of your selected contacts. When the MEP receives the e-mail, only his/her own address will be shown under the "to" field. The greeting line will be tailored to their specific information pulled from the **e-Contacts EP** Outlook contacts list.

## 8. Assistants

The version 2014.2 of e-Contacts EP introduces for the first time the contact details of all MEP assistants. This consists of a separate Outlook data file which, once installed, operates in a similar way to the regular e-Contacts EP.

In order to install the assistants' data file, please follow the same procedure as in point 3 of this guide.

The database contains the following information:

Assistant First and Last name, e-mail address, political group, Committees and Delegations of the MEP, MEP name, MEP e-mail, MEP home state, office numbers, phone and fax numbers (Brussels and Strasbourg), full postal addresses (Brussels and Strasbourg). All these fields can be sorted/filtered according to your needs.

Categories: C - InternalMarketConsumerProtection (65 items)					
Andrew Ephraim HILLMAN	Charanzová Dita	Accredited	ALDE		andrew.hillman@europarl.europa.eu
Maxim Ulrich HAUK	Charanzová Dita	Accredited	ALDE		maximulrich.hauk@europarl.europa.eu
Pedro Alexandre Maximiano PAULO...	Coelho Carlos	Accredited	EPP		pedro.paulosecruz@europarl.europa.eu
Marina FEBO	Comi Lara	Accredited	EPP		marina.febo@europarl.europa.eu
Myriam SANASI	Comi Lara	Accredited	EPP		myriam.sanasi@europarl.europa.eu
Alberto BIGINELLI	Danti Nicola	Accredited	S&D		alberto.biginelli@europarl.europa.eu
Bianca Maria PETERUTI	Danti Nicola	Accredited	S&D		biancamaria.petteruti@europarl.europa.eu
Milan VYSKOCIL	Pospíšil Jirí	Accredited	EPP		milan.vyskocil@europarl.europa.eu
Petr SOKOL	Pospíšil Jirí	Accredited	EPP		petr.sokol@europarl.europa.eu
Jan ZEDNIK	Pospíšil Jirí	Accredited	EPP		jan.zednik@europarl.europa.eu
Kerstin Helene GARBRACHT	Pretzell Marcus	Accredited	ECR		kerstin.garbracht@europarl.europa.eu
Georg RUST	Pretzell Marcus	Accredited	ECR		georg.rust@europarl.europa.eu
Claudia Kinga BARA	Gáll-Pelcz Ildikó	Accredited	EPP		claudiakinga.bara@europarl.europa.eu

**Note:** The assistants' forms contain two e-mails: their own e-mail address + the one of their respective MEP. This allows you to e-mail both the assistant and the MEP at the same time if needed. However, the assistant's email is set as the primary e-mail by default. Therefore, when sending group e-mails and mail merges, Outlook will send your message only to the primary e-mail of your contact, in this case, only to the assistant's e-mail address.

## 9. e-Contacts *EP* fields

In order to make vital fields available for Mail Merge, we changed labels for some fields in Outlook. Below is a list of all fields and how these data fields will appear in Word Mail Merge.

E-Contacts EP	Outlook	Comment
Title	Title	
First Name	First Name	
Last Name	Last Name	
<b>Party</b>	<b>Department</b>	<b>changed</b> label
<b>Member State</b>	<b>Home state</b>	<b>changed</b> label
<b>Group</b>	<b>Company</b>	<b>changed</b> label
EP Position	Job Title	<b>changed</b> label
EP E-mail	E-mail Address	renamed
<b>Brussels fields</b>		
BRU Street	Business Street	renamed
BRU Street 2	<b>Business Street 2</b>	renamed
BRU Street 3	<b>Business Street 3</b>	renamed
BRU Postal Code	<b>Business Postal Code</b>	renamed
BRU City	<b>Business City</b>	renamed
BRU Country	<b>Business Country</b>	renamed

<b>BRU Office Number</b>	<b>Office Location</b>	<b>changed</b> label
BRU Phone	<b>Business Phone</b>	renamed
BRU Phone 2	Business Phone 2	renamed
BRU Fax	<b>Business Fax</b>	renamed
Strasbourg fields		
STR Street 1	Other Street	renamed
STR Street 2	<b>Other Street 2</b>	renamed
STR Street 3	<b>Other Street 3</b>	renamed
STR Postal Code	<b>Other Postal Code</b>	renamed
STR City	<b>Other City</b>	renamed
STR Country	<b>Other Country</b>	renamed
STR Office Number	<b>Location</b>	<b>changed</b> label
STR Phone	<b>Other Phone</b>	renamed
STR Phone 2	<b>Callback</b>	<b>changed</b> label
STR Fax	<b>Other Fax</b>	renamed
User data fields		
Language	Language 1	
Web Page	Web Page	
Categories fields		
<b>Activities</b>	Categories	<b>changed</b> label